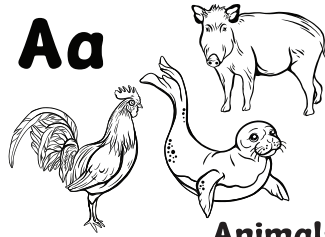


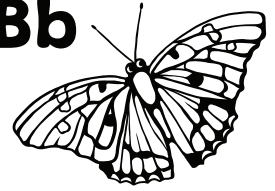
# ABCs

Aa



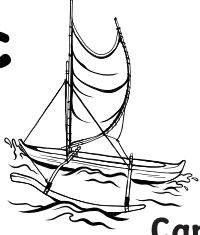
Animals

Bb



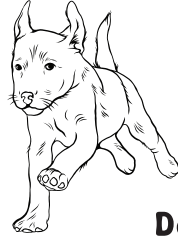
Butterfly

Cc



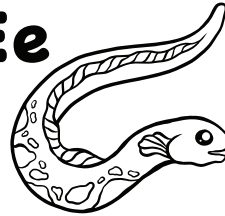
Canoe

Dd



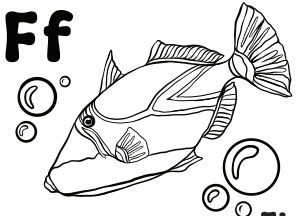
Dog

Ee



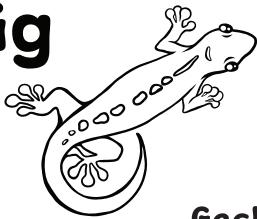
Eel

Ff



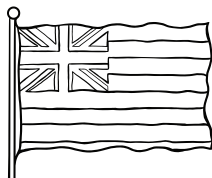
Fish

Gg



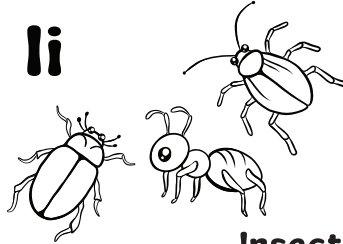
Gecko

Hh



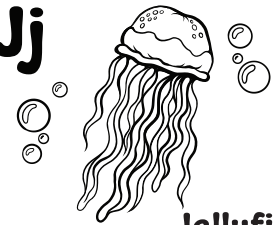
Hae Hawai'i

Ii



Insects

Jj



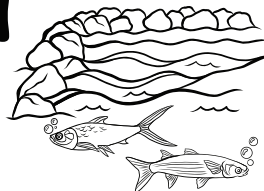
Jellyfish

Kk



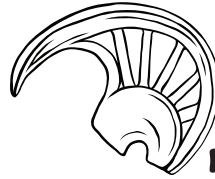
Kamehameha I

Ll



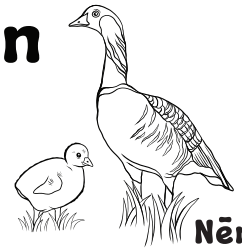
Loko i'a

Mm



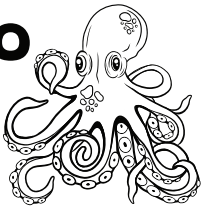
Mahiole

Nn



Nēnē

Oo



Octopus

Pp



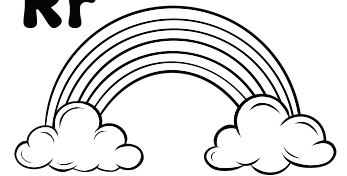
Princess Pauahi

Qq



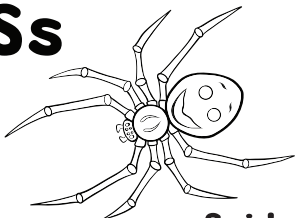
Queen Lili'uokalani

Rr



Rainbow

Ss



Spider

Tt



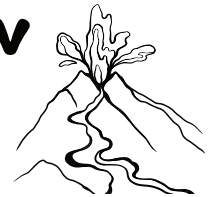
Ti Leaf

Uu



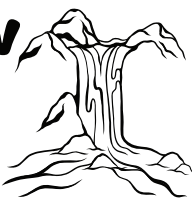
Umbrella

Vv



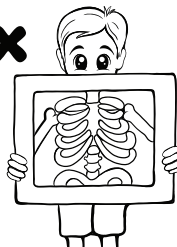
Volcano

Ww



Waialeale

Xx



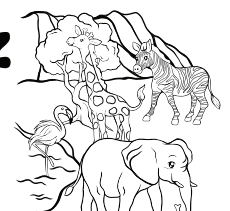
X-Ray

Yy



Yellowfin Tuna

Zz



Zoo