



Abbie How Newton  
Principal of Kamehameha School for Girls  
1915-1927

## **The Collection of Abbie H. Newton**

### **Finding Aid**

The Archives of Kamehameha Schools Museum

Stacy Naipo,  
Archivist

Candace W. Lee  
Assistant Archivist

Volunteers

Sharon Ahue Cole, KSG Class of 1963  
Alexander In, KSB Class of 1963

R. Kawika Makanani, KSK Class of 1966, kumu retired in 2014  
Jan Becket, photographer, kumu retired in 2014

Fenner-Marie Akaka Shupe, KSG Class of 1963  
Sally Akaka Truong, KSK Class of 1970

Taylour Chang, Punahou School Class of 2007

**Finding Aid**  
by Candace W. Lee  
Assistant Archivist

## **Collection Information**

**Repository:** The Archives of Kamehameha Schools Museum

**Abstract:** 4 photograph albums of various sizes. Only one contains captions. Various *Cadet* articles.

**Creator:** Kamehameha Schools archivists and librarians

**Title:** The Collection of Abbie H. Newton

**Bulk dates:** 1915-1927

**Language of Materials:** In English

**Size:** 1.5 linear feet

## **Administrative Information**

**Provenance:** Photograph albums were cataloged by the Kamehameha School for Girls Library. Photography was popular. It is not known whether Miss Newton was the photographer of some photographs. These albums were transferred to the Midkiff Learning Center which was dedicated in 1977. When the Kamehameha Schools Archives was opened in 1992, the albums were deposited there.

**Collection Identifier:** ANewton 2005-2

**Box Title:** Kamehameha School for Girls. Abbie H. Newton, Principal. 8/1/1915-1927. Four photographic albums.

**Access:** With the permission of the archivist or director

**Citation:** Kamehameha Schools.

**Copyright notice:** Copyright for these materials resides with Kamehameha Schools. Users are responsible to comply with current U.S. copyright laws. <http://www.ksbe.edu/disclaimer.php>

**Bibliographic record:** Kamehameha Schools Library Catalog.

## Biographical note

Abbie How Newton was the second principal of the Kamehameha School for Girls following the beloved and formidable Miss Ida Pope who died suddenly during the summer of 1914. Miss Frances Lemmon, a teacher, served one school year as the interim principal during the search for the irreplaceable Miss Pope.

From *Women of Hawai'i* edited by George F. Nellist, published in 1929 by E.A. Langton-Boyle, page 203:

*Miss Newton was born in Cincinnati, Ohio and is the daughter of George Gideon Newton and Abbie Frances How Newton. She was graduated from the Walnut Hill High School, Cincinnati. Matriculating at Wellesley College, she obtained her baccalaureate degree there and later did graduate work at the University of Cincinnati in her home city and also at Columbia University. Before coming to Hawaii, Miss Newton rendered volunteer social service at the Union Settlement in New York City in 1914. Miss Newton was instrumental in organizing the Girl Scouts of Oahu, which at that time was the third council of the organization west of the Rockies and is still active as a member of its council. [Queen Lili'uokalani was the sponsor] Another of Miss Newton's achievements was the originating and raising of the \$50,000 Ida M. Pope Memorial Scholarship Fund, the purpose of which was to utilize the general desire to honor the first principal of the Kamehameha School for Girls in a way that would make for the higher education of Hawaiian women, to whose educational needs Miss Pope had devoted her life. This scholarship is open to enrolled students a, and its beneficiaries are free to pursue advanced courses in art, or other subjects of their own selection in either Hawaii or at mainland institutions. Another distinct contribution of Miss Newton to the efficiency of the Kamehameha School for Girls is the successful carrying out of a plan for a Practice Cottage. The plan is adapted to the mutual development of a small group of high school girls in home-making. The girls in the group live in the cottage, are responsible for its conduct and management, including the care of a baby as the center of the model home. She has also initiated a form of student government in the institution, which is now in successful operation. Among other organizations, Miss Newton is identified with the American Association of University Women, the Wellesley Club, the Young Women's Christian Association, the Hawaiian Educational Association and the Oahu Teachers' Association.*

*The Cadet* of June 3, 1927, tells that the girls said aloha to Miss Newton who planned to retire to her sister's home in Los Angeles. She was a mother to the girls as well as the principal. She gave the school a painting called "Cloud Day" by Frank M. Moore.

From the *Kamehameha School for Girls' Memory Book VI, 1927-1930*, are the following Honolulu newspaper articles.

## Miss Abbie Newton Is Honored Guest At Reception Thursday

As an honor for Miss Abbie Newton, the trustees and faculty of the Kamehameha schools gave a reception at the Country club between 4 and 6 o'clock on Thursday afternoon, when they asked about 250 of Miss Newton's friends to bid her goodbye.

In the receiving line with Miss Newton were Mr. Frank Midkiff, president of the Kamehameha schools and Mrs. Midkiff; Mr. and Mrs. W. O. Smith and Mr. and Mrs. Albert Judd, representing the trustees; and Mr. and Mrs. John F. Nelson and Miss Maude Post.

Miss Frances Lemon, Miss Carolyn Church, Miss Katherine Durgner and Miss Emma Winslow alternated in pouring at the pretty tea table, and other members of the faculty of the girls' school assisted in the serving.

—

## ABBIE NEWTON RESIGNS FROM GIRLS' SCHOOL

### Principal At Kamehameha For Last 12 Years To Leave Educational Work

Miss Abbie H. Newton, principal of Kamehameha school for girls, has resigned from her position after 12 years of devoted and efficient service. She is the successor, with but one year's interim, of the first principal, Miss Ida M. Pope, in whose honor Miss Newton started the Ida M. Pope scholarship fund in 1919. This fund within a few years grew to more than \$45,000 and has already been the means of helping many a Hawaiian girl to continue her higher education either here or on the mainland, or to secure special professional training.

During Miss Newton's regime the work of her predecessor has been amplified and developed in many ways. Student government has been introduced at the girls' school and a strong student council is now functioning. A practice cottage for the seniors was established three years ago. Here the girls reside in rotation in groups of six under the direction of a trained supervisor and learn by actual practice the art of homemaking. Not only do they manage and care for the home in all its details, keeping their expenses within a prescribed budget, but they have the full charge of a young baby in addition to their regular academic work.

Miss Newton has reorganized the work of the various departments, bringing them all up to a high standard of efficiency. The last three years of high school work have been added during her principalship, thus giving Kamehameha a complete high school course preparatory to the normal school, the university or other higher institutions of learning.

Underlying and strengthening the academic and vocational training has been the work in character-building, which has been made the foundation of all the teaching and upon which constant stress has ever been laid. Miss Newton will long be remembered by the girls who have been associated with her in the happy atmosphere of the home life at Kamehameha school for girls.

## PRINCIPAL OF GIRLS' SCHOOL RESIGNS POST

After 12 years of valuable service, Miss Abbie H. Newton, principal of the Kamehameha school for girls, yesterday resigned from her position.

The history, development and success of Kamehameha girls' school for the last 12 years is interwoven with the principalship of Miss Newton.

After succeeding Miss Ida M. Pope, first principal of the school, Miss Newton was the moving factor in the establishment of the Ida M. Pope scholarship fund in 1919. Shortly after its establishment this fund grew to more than \$45,000 and has been instrumental in assisting many girls in completing their high school education.

One of the principal innovations made during Miss Newton's regime at the school has been the introduction of student government and the developing of a capable student council. And also Miss Newton is to be credited with several improvements which have materially increased the importance of the domestic science training at the school. A practice cottage, in which the girls reside for practical experience in home making, was established three years ago.

And then again Miss Newton has tactically reorganized all of the courses taught at the school and has increased the value of each department by her reorganization efforts.

One of the most important changes at the school effected by Miss Newton has been the addition of the last three years of high school training which has made Kamehameha school function as a complete high school.

" " "

## Miss Abbie H. Newton Is Honored at Luau

The Kamehameha schools alumni association honored Miss Abbie H. Newton with a most enjoyable luau at the home of Mrs. Charles L. Hall in Nuuanu, June 11. Miss Newton, who has been principal of the girls' school for 12 years, will leave soon for her home in Los Angeles.

The committee in charge of the luau was made up of Mrs. Hall, Mrs. Harry Stewart and Mrs. D. P. McGregor, assisted by Mrs. Hans Gitel, Mrs. J. Travis, Mrs. Hina, Mrs. David Harbottle, Mrs. Pearl Williams, Mrs. D. K. Pahu, Mrs. Karath, Mrs. Sam Oneha, Misses Pearl Neill, Daisy Bell, Ruby Nobriga and the Misses McGregor.

The pig was prepared by Rudolph Akuna, Lewis Hubbard and Solomon Choy Tong, students at Kamehameha under the direction of George Awai, at the home of the Rev. and Mrs. H. R. Poepoe. The chickens were cooked by Mrs. B. K. Kawiaea in true Hawaiian style and Mrs. David Kama assisted in preparing other Hawaiian delicacies.

Other special guests were Mr. and Mrs. Frank E. Midkiff. Beside these, only members of the alumni association were present, in all about 150. Music followed the feasting and then Miss Newton was presented with a koa writing set.

" " "



## Container List Summary

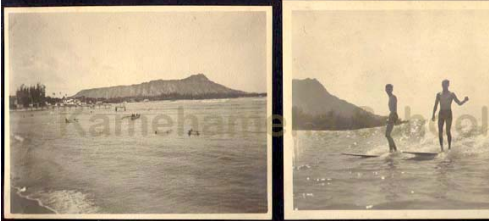
Folder	Description
1 A	Photograph album
1 B	Photograph album
1 C	Photograph album – captioned-General flora, island landmarks, personal photographs
1 D	Photograph album - KSG campus and people
2	Abbie H. Newton, Principal, Kamehameha School for Girls, 1915-1927 includes news articles from various sources about Miss Newton

**Painting** Presented to Kamehameha School for Girls by Abbie H. Newton

# Photograph album 1C

## Caption and image

a.1 Diamond Head and surf riding



*Diamond Head*

*Surf-riding*

## Caption and image

a.2 The Capitol (Palace)



*Judiciary Building*



*Kamehameha I.*

a.3 Judiciary Building, Kamehameha I



*The Capitol  
(Palace)*

a.4 Royal palms, Nu'uaniu Avenue



*Royal palms*



*Nu'uaniu Avenue*

a.5 Washington Place



a.6 Monkeypod at Moanalua



a.7 Rice planting at He'eia O'ahu



a.8 Bananas, ti leaves, getting ready for a luau



*Bananas*



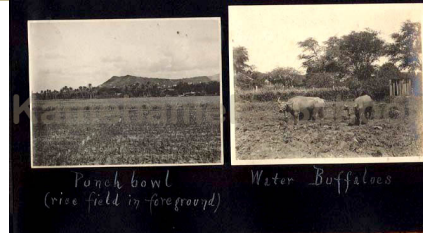
*Getting ready for a  
luau*



a.9 Taro grows in a taro patch



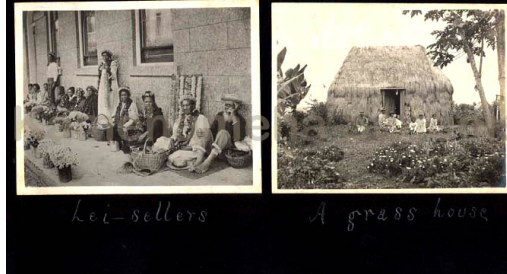
b.10 Punchbowl (rice field in the foreground), water buffaloes



b.11 Nu'uaniu Pali, the other side



b.12 Lei sellers, a grass house



b.14 Royal palms saman, travellers' tree, date palms



b.15 Waianae mountains and Pearl Harbor from Tantalus



b.16 Bishop Memorial Chapel



b.17 Traveller's tree, ironwood



b.18 Picking pineapple



b.19 A pineapple field



c.20 Sugar cane



c.21 Loading the cane



c.22 Rice fields



c.23 At Ainahau, Chinese mother and baby



c.24 Rainbow Falls, Hawai'i



c. 25 On the way to the pit



c.26 The bed of the crater, Kilauea



c.27 The lake which burneth with everlasting fire



c.28 Interior of grass house [staged



c.29 Kawaiaha'o Church



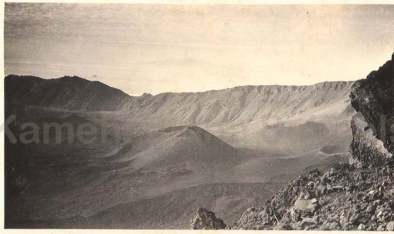
d.30 At Kapiolani Park, night-blooming cereus Punahou hedge



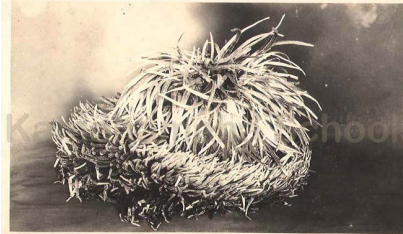
d.31 A bit of old Lahaina, The Needle, Iao Valley, Maui



d.32 Haleakala, Maui, the house of the rising sun



d.33 silversword [grows on Haleakala]



d.34 McKinley High School Honolulu, Hawaii



d.35 Banyan tree



d.37 An aboriginal



d.39 Thurston cottage



e.40 On the road up Tantalus, kukui trees (candle-nut) and koa, View from the Thurstons' Tantalus



e.41 A.H.N. on Tantalus, Punchbowl and Honolulu harbor from Tantalus



e.42 Waianae Mts, Pearl Harbor and Pauoa ridge from Tantalus



e.43 Recognition, absorption



e.44

e.45 Kamehameha Girls at Lili'uokalani's funeral November 18, 1917



e.46 Lying in state (Kawaiaha'o Church)

e.47 Royal regalia and kahilis



e.48 At the steps of the Palace

e.49 Nearing the Mausoleum



f.50 May Festival

f.51



f.52



f.53



f.54



f.55



f.56



f.57



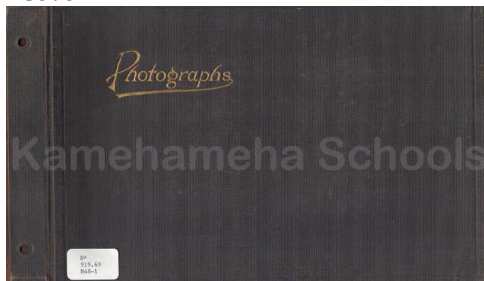
f.58 At Keahi's wedding



f.59



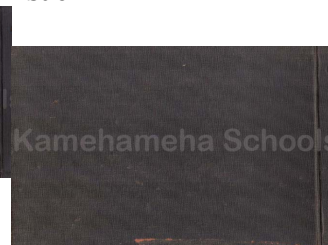
Cover



verso



back



# 1D Photo album--Kamehameha School for Girls campus and people

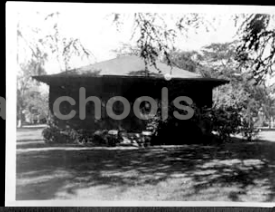
Number and image

a.1



Number and image

a.2



a.3

a.6



a.7

a.8



a.9



b.10



b.11



b.12



b.13



b.14



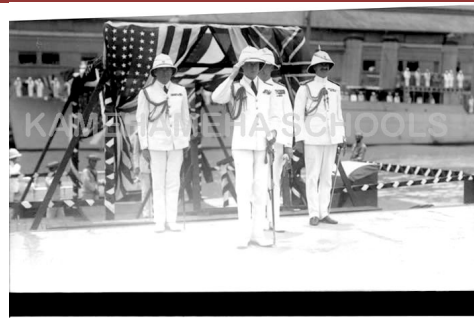
b.15



CLASS OF 1919, KAMEHAMEHA SCHOOL FOR GIRLS

- 
1. Emmeline Kaine
  2. Bertha Green
  3. Elsie Mahlow
  4. Miriam Crabbe
  5. Elnette Mabee
  6. Naomi Harrison
  7. Henrietta Eckart
  8. Elizabeth Reed
  9. Nellie Doroshelle
  10. Agnes Mitchell
  11. Harriet Aki
  - 12.
  13. Alice Pearson - principal 1910-1912
  - 14.
  15. Paul Wilson
  16. Kay Gregory
  17. Alice Ahi
  18. Victoria Kapaala
  19. Mary Jane Norton
  20. Eliza Hepe
- photos by Mrs. S.S. 9/11  
1919  
original in girls' address directory

b.16



b.17



b.18



b.19



b.20





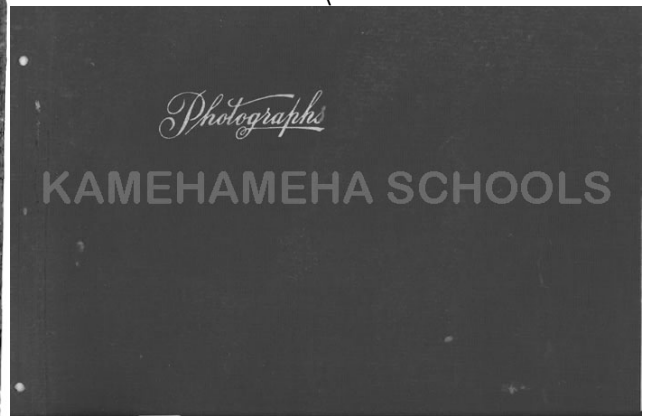
" " "  
Miss Abbie H. Newton  
Is Honored at Luau

The Kamehameha schools alumni association honored Miss Abbie H. Newton with a most enjoyable luau at the home of Mrs. Charles L. Hall in Nuuanu, June 11. Miss Newton, who has been principal of the girls' school for 12 years, will leave soon for her home in Los Angeles.

The committee in charge of the luau was made up of Mrs. Hall, Mrs. Harry Stewart and Mrs. D. F. McGregor, assisted by Mrs. Hans Git-tel, Mrs. J. Travis, Mrs. Hina, Mrs. David Herbottle, Mrs. Pearl Williams, Mrs. D. K. Pahu, Mrs. Kar-rath, Mrs. Sam Oneha, Misses Pearl Nell, Daisy Bell, Ruby Nobriga and the Misses McGregor.

The pig was prepared by Rudolph Akuna, Lewis Hubbard and Solomon Choy Tong, students at Kamehameha under the direction of George Awa, at the home of the Rev. and Mrs. H. R. Poepoe. The chickens were cooked by Mrs. B. K. Kawiaea in true Hawaiian style and Mrs. David Kama assisted in preparing other Hawaiian delicacies.

Other special guests were Mr. and Mrs. Frank E. Midkiff. Beside these, only members of the alumni association were present, in all about 150. Music followed the feasting and then Miss Newton was presented with a koa writing set.



## Gift to Kamehameha School for Girls from Abbie H. Newton



Plaque: Presented to Kamehameha School for Girls by Abbie H. Newton

Size: 20" length x 24" width (50.8 cm x 60.96 cm)

About the artist: Frank Montague Moore (1877-1967)  
F.M. Moore was born in Taunton, England. He studied at the Liverpool Art School and Royal Institute. In 1903, Moor immigrated to America and had further study with Henry Ward Ranger. By 1910, he was an established artist in New York City and in that year moved to Hawaii where he later served as director of the Honolulu Academy of Arts. In 1928, he sailed for California and worked briefly in Pasadena and San Francisco before settling in Carmel. Frank Montague Moore specialized in poetic depictions of the coast and scenic spots on the Monterey Peninsula. (Written by Edan Hughes)